


Figure 4. A sketch in the Illustrated Historical Atlas of the County of Peel (1877) identifies “Evergreen” on the 4th Line (Mississauga Road) as the residence and mill of G.S. Fuller.

Location	Description of Resource and Heritage Recognition	Digital Image
8472 Mississauga Road, west side (East Part Lot 3, Con. 5 WHS, geographic township of Chinguacousy)	<p>Garrett Fuller Residence</p> <p>The Illustrated Atlas (1877) notes Garrett S. fuller built “a beautiful large brick with mansard roof” in 1877. This 2 storey, brick masonry, Italianate residence has been altered but still exhibits its stylistic characteristics. It is currently vacant.</p> <p>Municipally listed under the OHA (Class B).</p>	 <p>Front (east) elevation.</p>

1.3 Heritage Tower

A class B heritage building within the site was torn down. A heritage tower will be built as a corner feature to commemorate this building by recycling the existing bricks, and to be rebuilt in the style of the building.

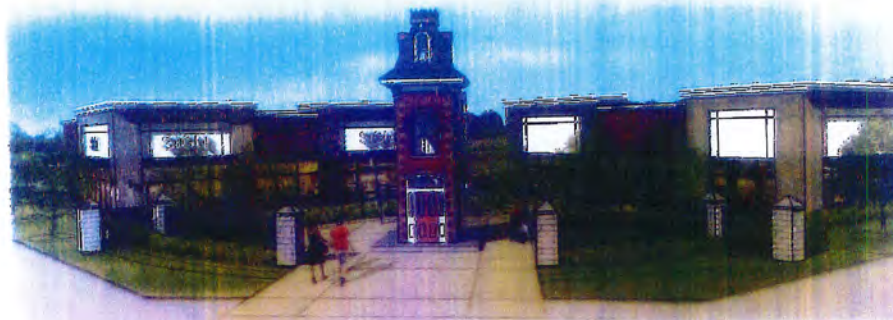
*Guidelines:

- The size of the tower base is based on a measured drawing originally prepared for the Heritage Assessment. ATA utilized photographs as well to assist the detailing of the tower. The tower is constructed from reclaimed brick from the site that will be washed to remove most of dirt and grime, but not to an “as new” level. The intent is to obtain a consistent brick colour for both the red and buff bricks. The back side of the bricks will be used if the face is damaged or stained. A bull toned lime base metal will be used in the reconstruction.



Photo of the class B heritage building.

10.3-7



Coloured rendering by Turner Fleischer Architects Inc. from original drawing by ATA Architects Inc.

- The vertical signage on the side the tower will be punched letters out of an aluminum or steel strip, held off the building. The Kanneif – lettering will be raised metal letters. No sign boxes or illuminated letters are proposed.
- The tower is set in large open plaza at the corner of the development, providing both exposure and visual breathing space for the heritage structure. The adjacent buildings will act as simple contemporary backdrop. The visual connection will be the use of similarly coloured red brick that will increase the visual prominence of the tower. I believe the contemporary approach is the best alternative, it is representative of the design for the rest of the plaza and avoids a “faux” heritage appearance that would be only present at that one location. It is intended that one or two patios will open onto the square, making the historical connection of the site a prominent part of the public’s experience at the retail centre.



Site plan corner at Mississauga Road and Financial Drive

* Guidelines for Heritage Tower by ATA Architects Inc.