

CONFERENCE 2015 - CHURCH SERVICE

Our Church service will take place in the James Bay United Church. It is a level route, just short of 1 kilometer, from the Conference site hotel. Due to the close proximity, the Planning Committee saw an opportunity to provide everyone with a post breakfast stroll. If this is not to your taste, so to speak, we are going to suggest either hiring a taxi or a horse drawn carriage to "*get you to the church on time*". However, For those with mobility issues, members of Victoria Branch will be available to transport participants to and from the church.

JAMES BAY UNITED CHURCH

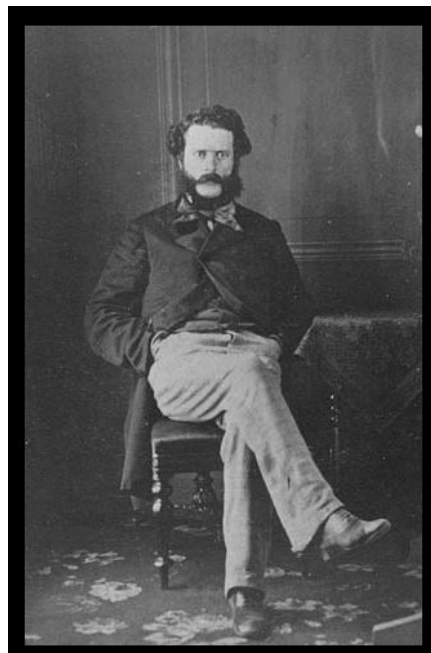


The Church was founded as a Methodist Church 1891. Construction of the building was begun in 1891 and dedication was on Sunday August 1892 by the Reverend Dr. Ebenezer Robson. Apparently the dedication service drew a capacity crowd. Owing to it being a warm summer day, a large crowd and a lack of ventilation, it was reported that those in the balcony were somewhat discomforted!

Dr Robson, one of the first four Methodist missionaries to serve in the Colony, arrived in the 1860's and was very active throughout the Victoria and Vancouver areas well into the 1900's.



He was brother to John Robson, who also had a significant presence in the Province. John Robson's resume included being editor of the Colonist Newspaper (still in operation today as the Times Colonist Newspaper) and British Columbia's ninth Premier. James Bay United Church is one block behind the Provincial Legislature, where John Robson sat as Premier.



John Robson
Beards aside they do look related!

James Bay Methodist Church became James Bay United Church at the time of Church Union in 1925.

Due to the "intimate" size of the James Bay United Church, we will have our own service at approximately 9 AM on Sunday May 31st, 2015.. Shirley Dargatz, U.E., of the Chilliwack Branch, will lead this service after which the United Church Women group will serve a light muffin/coffee/tea snack.

HORSE DRAWN CARRIAGE



Don't forget checkout time at the hotel is 12 noon. So a lock-up will be available for those who will be leaving that day. Remember, your reduced room rate lasts 3 days after the end of the conference so you can partake of tourist activities such as whale watching, garden tours, shopping, etc.

Visit the Victoria Branch website to keep up-to-date on the planning for 2015.
<http://www.uelac.org/uelvictoria/UELAC-Conference-2015-Victoria-BC.htm>

Conference 2015 Planning Committee